

GET TO KNOW YOUR CURL SECRET®

ALWAYS READ QUICK START GUIDE BELOW AND ENCLOSED INSTRUCTION SHEET CAREFULLY BEFORE USING PRODUCT.

GETTING STARTED

Plug **Curl Secret®** into any electrical outlet (120-240V). Press and hold the **U** button for approximately 1 second to turn on unit and LED display.

TEMPERATURE — Press **U / TEMP** button repeatedly until desired temperature is reached. (150°C/300°F, 165°C/330°F, 180°C/355°F, 195°C/385°F, 210°C/410°F)

CURL DIRECTION — Press **DIRECTION** button to select the direction of the curl.



CURL TYPE — Press **CURL TYPE** button to select desired curl.



TO CURL

Hair should be clean and completely dry before using **Curl Secret®**. Comb through to remove any tangles and divide hair into sections no wider than 1 inch (the smaller the section, the tighter the curls). For best results, use a light heat protectant or primer before styling hair.

1. Select your desired temperature, curl type, and curl direction settings. (Fig. 1 and 2)
2. Hold the styler vertically/upright with the short slot opening facing towards head.
3. Place a section of hair in the opening at the top of the unit making sure that all the hair is placed inside the top of the split barrel. (Fig. 3)
4. Guide the remaining section of the strand of hair down the long slot until it's below the * symbol and gently hold in place to ensure proper position for curling.
5. Press the **START** button and watch the magic happen as your hair gently wraps around the barrel. (Fig. 4)
6. Hold the curler in place until you hear the rapid beeps. (Fig. 5)
7. Pull the curler down and away to reveal the curl. (Fig. 6)
8. Use light hair spray to set the curls and maximize curl longevity.



Fig. 1



Fig. 2



Fig. 3



Fig. 4



Fig. 5

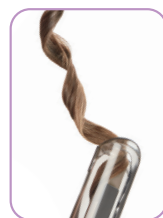
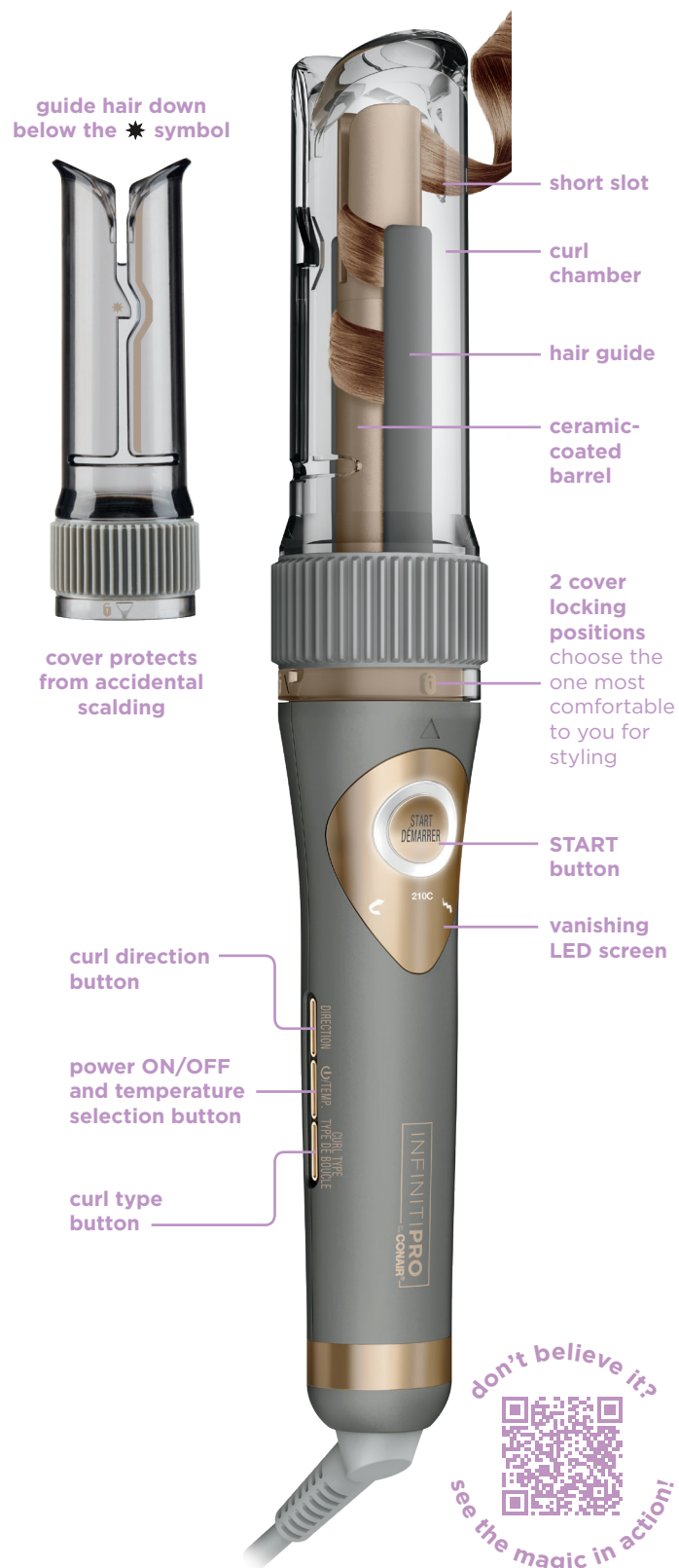


Fig. 6



FEATURES

TANGLE-FREE FEATURE

Curl Secret® is safe and easy to use when used properly. However, should improper use occur, the tangle-free feature has been designed to immediately stop unit from drawing hair into the chamber and reverse unit to a neutral position.

IMPORTANT: If hair does get tangled, press the **START** button to stop the current curling operation or unplug the unit directly. Then work the hair out of the unit carefully. Using your fingers, slowly remove a few strands of hair from the chamber at a time. Make sure fingers do not come in contact with heated chamber.

AUTO BEEP INDICATOR

Unit will beep rapidly when curl is ready to release.

MEMORY FUNCTION

Unit will default to previous settings used for quick styling.

AUTO SHUTOFF

If the appliance has been continuously on for 60 minutes, it will automatically switch off. If you wish to continue using the appliance, simply press and hold the **U / TEMP** button for approximately 1 second to turn the power on. Unit will default to the last settings used.

ENERGY-EFFICIENT MODE

If the unit is on and idle for more than 20 minutes, it will go into low-energy mode. To continue styling, press the **START** button.

U.S. Patents 9,788,625; 10,238,196; and other granted and pending U.S. and international patents.

23CN088564 Models CD1031C - All Versions

CUSTOMIZED CURLS

Change your style by experimenting with different combinations of temperature, curl direction, and curl type. See chart to the right!

EXPERT STYLING TIPS

For a pro-styled, natural look, curl away from your face. Use **↶** for curling the right side of your head and **↷** for curling the left side of your head. For a more unstructured look, select **↻** to alternate curl direction. When done curling, flip your head over and run fingers through hair to loosen up curls even more.

style	temp	direction	curl type	finishing
ultra-defined curls	195/210°C (385/410°F)	↶	🌀	let hair cool before gently shaking curls
classic curls	180/195/210°C (355/385/410°F)	↶	🌀	let hair cool before combing through with a wide-tooth comb
glam curls	180/195/210°C (355/385/410°F)	↶	🌀	let hair cool before using a paddle brush
soft, natural curls/waves	150/165/180°C (300/330/355°F)	↻	🌀	let hair cool before combing with a wide-tooth comb
beachy waves	180/195/210°C (355/385/410°F)	↻	🌀	Let hair cool before using fingers to tousle and loosen curls for a unstructured look

For your safety and enjoyment of this product, always read the instruction sheet below and enclosed quick start guide carefully before using.

IMPORTANT SAFETY INSTRUCTIONS

When using this product, especially when children are present, basic safety precautions should always be taken, including the following:

READ ALL INSTRUCTIONS BEFORE USING KEEP AWAY FROM WATER

DANGER

— Any appliance is electrically live even when the switch is off. To reduce the risk of death by electric shock:

1. Always unplug appliance immediately after using.
2. Do not use while bathing or in the shower.
3. Do not place or store appliance where it can fall or be pulled into a tub or sink.
4. Do not place in or drop into water or other liquids.
5. If an appliance falls into water, unplug it immediately. Do not reach into the water.


WARNING

— To reduce the risk of burns, electrocution, fire, or injury to persons:

1. This appliance should never be left unattended when plugged in.
2. Do not pull, twist, or wrap line cord around appliance.
3. This appliance should not be used by, on or near children or individuals with certain disabilities.
4. Use this appliance only for its intended use as described in this manual. Do not use attachments not recommended by the manufacturer.
5. Never operate this appliance if it has a damaged cord or plug, if it is not working properly or if it has been dropped, damaged, or dropped into water. Return the appliance to an authorized service center for examination and repair.
6. Keep the cord away from heated surfaces.

7. Never use while sleeping.
8. Never drop or insert any object into any opening or hose.
9. Do not use outdoors or operate where aerosol (spray) products are being used or where oxygen is being administered.
10. Unit is hot when in use. Do not let heated surface touch eyes or skin.
11. Do not place the heated unit directly on any surface while it is hot or plugged in.
12. Never block the air openings of the appliance or place it on a soft surface, such as a bed or couch, where the air openings may be blocked. Keep the air openings free of hair, lint and other debris.
13. Do not use an extension cord with this appliance.
14. Do not touch hot surfaces of the appliance. Use handles or knobs.
15. Do not attempt to touch the housing of your appliance near the curl chamber, as it is hot when in use.
16. Do not operate with a voltage converter.
17. This appliance is not a toy. Keep away from children.
18. Before plugging in, read the information about dual voltage in the Operating Instructions section below.

SAFETY INSTRUCTIONS

1. Do not use the unit if it is damp or if your hands are wet.
2. **WARNING:** Polyethylene bags containing this product or its packaging can be dangerous. To avoid the risk of suffocation, keep these bags out of the reach of babies and children. A polyethylene bag is not a plaything.
3.  Do not use over or near washbasins, bathtubs, showers or other containers with water. Store the unit in a dry place.
4. If the appliance is used in a bathroom, unplug it after use. Leaving the appliance near a source of water may be dangerous, even if the appliance is off.
5. Do not immerse the appliance in water or any other liquid.
6. Stop using the appliance immediately if the cord is damaged. The power supply cord should not be replaced by the end user. The power supply cord should only be replaced by the manufacturer's authorized importer (or, in the United States and Canada, by an authorized Service Center).
7. Do not leave the appliance unattended while it is plugged in or in use.

8. Do not let the appliance's hot surfaces touch eyes or skin.

9. This appliance is not intended for use by persons (including children) with reduced physical, sensory or mental capabilities, or lack of experience and knowledge, unless they have been given supervision or instruction concerning use of the appliance by a person responsible for their safety. Children should be supervised to ensure they do not play with the appliance.

10. Allow the appliance to cool before storing.

11. After use, do not wind the cord around the appliance as this may damage it. Instead, roll the cord up loosely and let it rest by the side of the appliance.

12. Burn hazard. Keep appliance out of reach from young children, particularly during use and cool down.

13. When the appliance is connected to the power supply, never leave it unattended.

14. Always place the appliance with the stand, if any, on a heat-resistant, stable flat surface.

SAVE THESE INSTRUCTIONS OPERATING INSTRUCTIONS

This unit is designed to operate at 120-240 volts AC. Use on Alternating Current (50-60 hertz) only. This appliance has a polarized plug (one blade is wider than the other). As a safety feature, this plug will fit in a polarized outlet only one way. If the plug does not fit fully in the outlet, reverse the plug. If it still does not fit, contact a qualified electrician. Do not attempt to defeat this safety feature.

DUAL VOLTAGE

This auto curler will automatically adjust to the proper voltage. Use an adapter plug with correct configuration prior to use in outlet.

NOTE: Do not use this styling appliance on hair extensions.

FEATURES

CERAMIC TECHNOLOGY

Even heat eliminates damaging hotspots for healthy-looking, shiny hair.

TANGLE-FREE FEATURE

Curl Secret® is safe and easy to use when used properly. However, should improper use occur, the tangle-free feature has been designed to immediately stop unit from drawing hair into the chamber and reverse unit to a neutral position. **IMPORTANT:** If hair does get tangled, press the **START** button to stop the current curling operation or unplug the unit directly. Then work the hair out of the unit carefully. Using your fingers, slowly remove a few strands of hair from the chamber at a time. Make sure fingers do not come in contact with heated chamber.

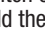
AUTO BEEP INDICATOR

Unit will beep rapidly when curl is ready to release.

MEMORY FUNCTION

Unit will default to previous settings used for quick styling.

AUTO SHUTOFF

If the appliance has been continuously on for 60 minutes, it will automatically switch off. If you wish to continue using the appliance, simply press and hold the  button for approximately 1 second to turn the power on again. Unit will default to the last settings used.

ENERGY-EFFICIENT MODE

If the unit is on and idle for more than 20 minutes, it will go into low-energy mode. To continue styling, press the **START** button.

VANISHING LED DISPLAY

Offers intuitive setting selection.

60-SECOND HEAT-UP

NOTE: Curl chamber will be hot to the touch.

USER MAINTENANCE

Your styler is virtually maintenance free. No lubrication is needed. Keep all vents and openings clear of dirt and dust. If cleaning becomes necessary, disconnect the unit from the power source and allow it to cool. Twist off cover and wipe curl chamber and cover with a soft, damp cloth. Replace cover back on unit after cover and chamber have dried. Twist cover until it locks in place on unit. If any abnormal condition occurs, unplug the unit, allow it to cool, and return it for repair to an authorized service representative only. No repairs should be attempted by the consumer.

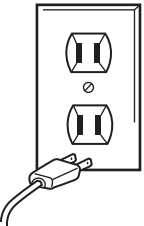
CAUTION

NEVER allow the power-supply cord to be pulled, twisted, or severely bent. Never wrap the cord tightly around the appliance. Damage will occur at the high flex point of entry into the appliance, causing it to rupture and short circuit. Inspect the cord frequently for damage. Stop use immediately if damage is visible or if unit stops or operates intermittently.

STORAGE

When not in use, your appliance is easy to store. Allow appliance to cool, then simply store out of reach of children in a safe, dry location. Do not jerk or strain cord at plug connections. Do not wrap the line cord around the appliance. Allow the cord to hang or lie loose and straight at the point of entry into the appliance.

WARNING: IF YOU THINK THE POWER IS OFF WHEN THE SWITCH IS OFF, YOU'RE WRONG.



KEEP AWAY FROM WATER

Everyone knows that electricity and water are a dangerous combination. But did you know that an electric appliance is still electrically live even if the switch is off? If the plug is in, the power is on. So when you are not using your appliances, keep them unplugged.

ALWAYS UNPLUG SMALL APPLIANCES

LIMITED FIVE-YEAR WARRANTY

(U.S. AND CANADA ONLY)

Conair will repair or replace, at our option, your appliance free of charge for 60 months from the date of purchase if the appliance is defective in workmanship or materials.

To obtain service under this warranty, return the defective product to the service centre listed below, together with your purchase receipt. In the absence of a purchase receipt, the warranty period shall be 60 months from the date of manufacture.

ANY IMPLIED WARRANTIES, OBLIGATIONS, OR LIABILITIES, INCLUDING BUT NOT LIMITED TO THE IMPLIED WARRANTY OF MERCHANTABILITY AND FITNESS FOR A PARTICULAR PURPOSE, SHALL BE LIMITED IN DURATION TO THE 60 MONTH DURATION OF THIS WARRANTY.

IN NO EVENT SHALL CONAIR BE LIABLE FOR ANY SPECIAL, INCIDENTAL, OR CONSEQUENTIAL DAMAGES FOR BREACH OF THIS OR ANY OTHER WARRANTY, EXPRESS OR IMPLIED, WHATSOEVER.

This warranty gives you specific legal rights, and you may also have other rights which vary from province to province.

Due to continued product enhancements, the product featured may differ slightly from the actual product purchased.

SERVICE CENTRE:

CONAIR CONSUMER PRODUCTS ULC

100 Conair Parkway

Woodbridge Ontario, L4H 0L2

©2023 CONAIR CONSUMER PRODUCTS ULC

For more information on any Conair product call:

1-855-926-6247

Visit our Web site: www.conaircanada.ca

Consumer Call Centre E-mail: Consumer_Canada@Conair.com

Made in China

U.S. Patents 9,788,625; 10,238,196; and other granted and pending U.S. and international patents.

23CN087882 Model CD1031C - All versions

IB-18039